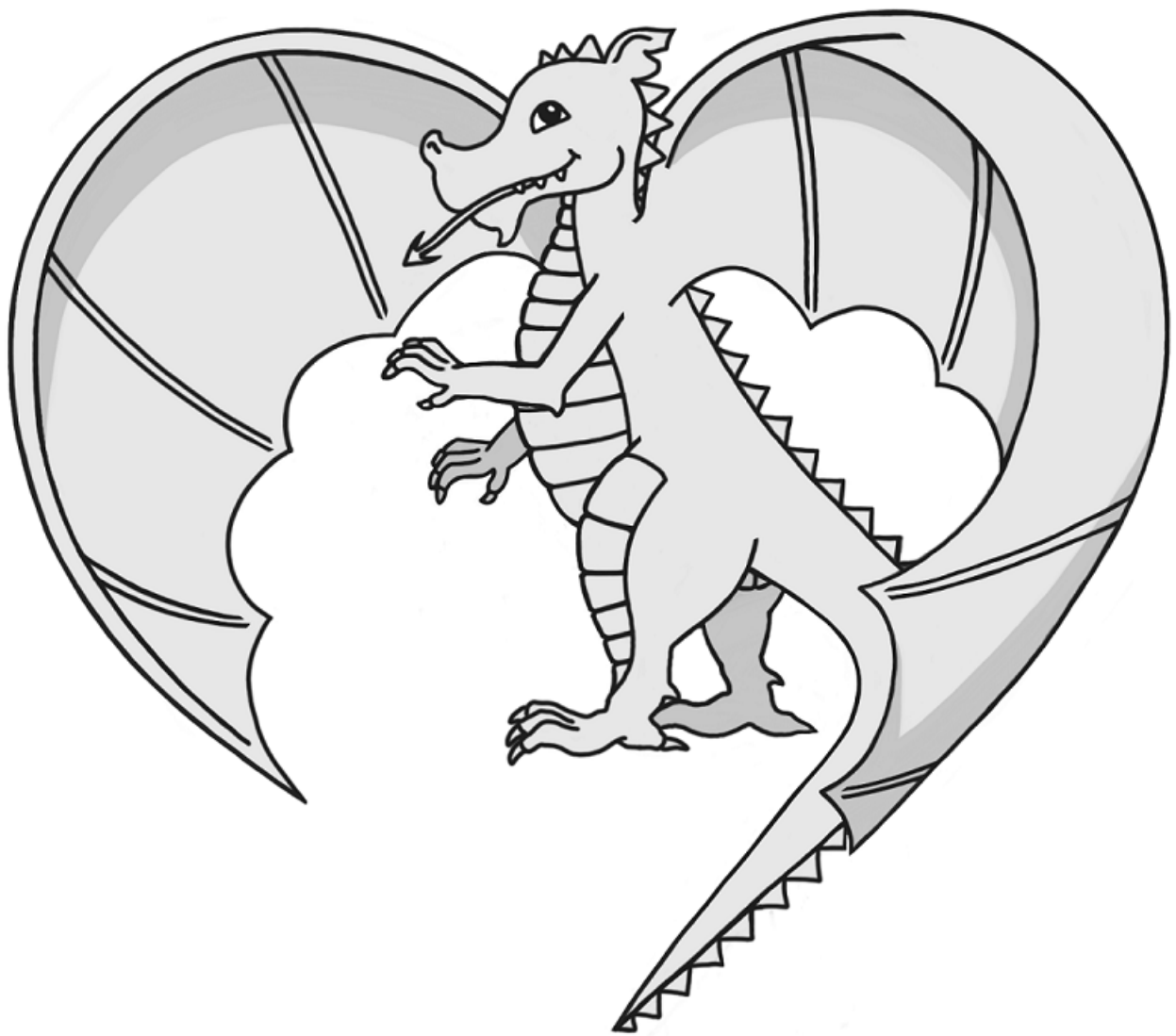


Governing Body Annual Report to Parents



Academic Year 2020/21



YSGOL Y DDRAIG



YSGOL Y DDRAIG PRIMARY SCHOOL
HAM LANE EAST
LLANTWIT MAJOR
VALE OF GLAMORGAN
CF61 1TQ

TEL /FFÔN: 01446 792368
EMAIL/E-BOST: ddraig@valeofglamorgan.gov.uk
WEBSITE/GWEFAN: www.ysgolyddraig.co.uk
TWITTER: @ysgolyddraig

Mr Ty Golding
Headteacher/Pennaeth

December 2021

Dear Parent/Guardian

Governors' Annual Report to Parents

On our return to school in September 2020, we had to adjust to the new reality of living with the effects of the pandemic. Everyone within the school community - all staff, pupils and parents - showed amazing resilience and flexibility in navigating the complicated rules, the need for bubbles and for periods of isolation, in order to keep the school running as effectively as possible.

Further adjustment came with the request from the Vale that our Headteacher, Mr Golding, take on temporary responsibility for Holton Primary School in Barry, resulting in his becoming Executive Head of both schools. Miss Cadman stepped seamlessly into the role of Head of School and took on the day-to-day running of the school while Mr Golding continued to oversee our strategic direction. They make a brilliant team and we are very lucky to have them both.

The Governing Body welcomed new parent governors and continued to meet remotely, though looking forward to a time when we can once again be more closely involved with school events and daily life. The entire Governing Body would like to thank everyone for all their hard work in keeping people safe while delivering a first-class education.

Yours sincerely

Rebecca Lloyd James, Chair of Governors



YSGOL Y DDRAIG



Governors' Annual Report to Parents 2020~21

As governors, we are responsible for the conduct of the school with a view to promoting high standards of educational achievement and we have a legal responsibility to exercise our functions with a view to safeguarding and promoting the welfare of the school's pupils. This report is a summary of the steps taken by the Governing Body in the discharge of these functions in the last academic year. The report covers the year 1st September 2020 to 31st August 2021.

1. Members' details

The Governing Body comprises members of the local community, parents, staff and representatives of the Local Authority. This helps to ensure that the Governing Body has a sufficient diversity of views and experience, but does not mean that governors of a particular category "represent" that group on the Governing Body. All governors are voluntary and are elected for a 4-year term of office. Information on Parent Governor Elections will be sent to parents at the appropriate time.

Chairperson

Mrs Rebecca Lloyd-James

Headteacher

Mr Ty Golding

Parent Governors

Mrs Nicola John
Mr Shaun Chadwick
Mr Gareth Price
Mrs Sian James
Mr Dave Berrey

Local Authority Governors

Mr David Thomas (Vice-Chairperson)
Mr John Durrant
Mr David Powell

Community Governors

Rev. Phil Hibbert
Father Edwin Counsell
Mrs Kathy McCollin

Teacher Representatives

Miss Rebecca Cadman (Advisory)
Miss Nicole Cogbill
Mrs Jodie Davies

Local Authority Representative

Cllr Sally Hanks

Staff Representative

Mrs Julie Roberts

Clerk

Miss Rachel Cox c/o Vale of Glamorgan

2. Learning and Teaching

Ysgol y Ddraig staff continued to develop pedagogical approaches to support all learners in line with Curriculum Reform throughout the academic year.

During lockdown, from the beginning of January 2021 and return to school later in the Spring Term, we developed and improved our 'Distance and Blended Learning' approaches. These methods combined learning in school with distance learning via online platforms. Seesaw continued to be used for our Foundation Phase (Nursery - Year 2) and Google Classroom in Key Stage 2 (Years 3 to 6).

Throughout this period of school closures, the use of Google Meet was introduced for live check in sessions with class teachers. This allowed children to participate in live sessions with their teachers and supported both learning and wellbeing.

Emergency Education Provision (EEP) January - March 2021

During school closures in Spring 2021, the school provided Emergency Education Provision (EEP) for the children of key workers. The school continued to keep in touch with all families through a variety of means and supported our most vulnerable families.

3. Performance Information

As a result of the Covid 19 pandemic, Welsh Government suspended the requirement for schools to report on national testing and end of phase assessments.

4. Record of Attendance and Absences (%)

As a result of the Covid 19 pandemic, Welsh Government suspended the requirement for schools to report on attendance.

Pupil Figures as at September 2020

Year Groups	Number of Children
Nursery	23
Reception	30
Year 1	32
Year 2	35
Year 3	37
Year 4	48
Year 5	53
Year 6	56
Total	314

5. Transfer to Secondary School

Year 6 pupils transferred to the following secondary schools in July 2021:

Llantwit Major Comprehensive	59
Cowbridge Comprehensive	0
Other	1

6. Budget/Financial Statement

The out-turn statement for the school for the year April 2020 to March 2021 can be found in Appendix A at the end of this Report.

The governors noted the formula allocation to the school and were involved in drawing up a proposed budget for the coming year along with the Headteacher, School Business Manager and School Finance Support officer from the Local Authority (LA).

The Personnel and Finance Sub Committee of the Governing Body meet at least once every term in order to monitor the school's budget and make recommendations to the full Governing Body for spending and allocating funds. Governors approved the purchase of the various service level agreements from the LA and outside bodies.

7. Information for Parents/Carers and the School Prospectus

We seek to keep parents and the community informed of the school's activities. Parents receive a Newsflash once a week which provides relevant information, including: important dates, details of special events, trips and visits. In addition, weekly class news is shared via a Home Learning letter.

We also communicate with many of our parents by email and this is proving very successful. If you are not receiving information in this way, please provide us with your email address as soon as possible and give consent for us to contact you with school news via email.

The website www.ysgolyddraig.co.uk is also a useful tool for communicating information about the school.

In addition to this Annual Report, there is a School Prospectus full of useful information which is updated every year and is available to all new or prospective parents considering sending their child to Ysgol y Ddraig, and to existing parents who request it. The Prospectus is also available to view on our school website.

8. Curriculum Statement

The purposes of learning and the new Curriculum for Wales are to create:

1. Ambitious, capable learners.
2. Healthy, confident individuals.
3. Ethical informed citizens.
4. Enterprising and creative contributors.

Learning experiences at Ysgol y Ddraig are planned to ensure that children can 'Achieve, Challenge, Enjoy' and aim to ensure children reach their full potential.

We keep abreast of all National Curriculum reform and developments, implementing any change as appropriate for our children and the school.

All children are taught a wide range of skills, knowledge and understanding through areas of learning and subjects delivered in a cross-curricular way through topics.

Termly progress reporting to parents and carers was introduced in Autumn 2020. This followed consultation with parents and carers. The revised reports aim to further include and improve dialogue between learners, teachers and their parents.

Staff have focussed reading and research to the 'Cultures of Learning' which will inform policy and practice in further developing our Ysgol y Ddraig approach alongside Curriculum delivery and design.

9. Welsh as a Second Language

Welsh is taught within lessons, through daily snappy Welsh sessions and through incidental use. The Welsh language is promoted and taught in the school in line with Welsh Government requirements, we are lucky enough to have some members of staff who are fluent in Welsh. Staff who wish to further improve their Welsh fluency are actively encouraged and supported by the governors to do so. 98.7% of children are first language English/Welsh and 1.3% of children are other European first language.

10. Policies

All school management policies are reviewed regularly by staff and governors. Children (through the Senedd or other pupil voice group) and parents are consulted where appropriate. Review dates are recorded in the policies. Changes are brought to the full Governing Body for information and agreement. All policies are available for parents to view on request.

11. School Improvement Plan

Parents and Key Stage 2 children were asked to complete questionnaires in the Summer Term. We continue to involve all stakeholders in the self-evaluation process. Teachers who are Area of Learning and Experience (AoLE) Leaders consult learners, link governors and parents and colleagues before drafting a curriculum review and plan for priorities for the development for the year.

The School Improvement Plan is available to view via the school website.

The School Improvement Plan for 2020/21 contained action plans for:

- High-quality professionals including Curriculum Reform
- Equity and wellbeing
- Inspirational leaders

Every term the Headteacher provides all governors with a detailed, analysis of steps taken, progress made and the way forward.

12. Community Links

We have strong links with the community. Prior to Covid-19 we were involved in many visits to the local churches and library. Use of the local environment in projects are an important part of the curriculum. Visits by members of the local community are regular aspects of school life. These were maintained online during the academic year.

The school provides work experience for pupils from nearby comprehensive schools and colleges. Ysgol y Ddraig has formed an alliance with Cardiff Met and contributes to Initial Teacher Education by providing placements for student teachers.

13. Support for Charities

The children, parents, staff and governors of the school enjoy supporting a range of charities every year in a variety of ways. It is an important part of the pupils' development in citizenship and, wherever possible, pupils are involved in the organisation of the event.

Support for Charities

Event	Charity supported	Donation
Children in Need Spotty Day	Children in Need	£238.00
Royal British Legion Poppy Wreath	Veterans	£25.00
Non Uniform Day	Llantwit Christmas Illuminations	£56.64

14. Extra-Curricular Activities

As a result of the Covid 19 pandemic, extra curricular activities were unable to be scheduled for the majority of the school year.

Our Year 6 leavers were able to enjoy an end of year trip to the Infinity trampoline Park and Hollywood Bowl.

The school hosted range of holiday clubs during the academic year 2020 - 2021.

Easter Holiday Club 30 th and 31 st March, 6 th and 7 th April 10am till 2pm	Up to 20 children per day	<ul style="list-style-type: none">➤ Forest School sessions➤ Cooking sessions➤ Indoor and outdoor play sessions
SHEP 19 th July to 5 th August	38 children overall	The holiday club was run in conjunction with Big Fresh Catering, VoG. Parents were invited to attended the final session. <ul style="list-style-type: none">➤ -Sporting activities - dance, relays, Taekwondo➤ -Food - nutrition sessions➤ -Enrichment (craft, STEM, forest schools)➤ -LEGO challenge
Summer of Fun 30 x 2.5 hour sessions delivered	94 attendees who attended 454 sessions Sessions open to cluster primary schools	This was Military Style Command Tasks and Team Building Challenges run by Forces Fitness: <ul style="list-style-type: none">➤ Team Games, Dodge Ball, Basketball, Handball➤ Water Challenges➤ Inflatable Obstacle Course Challenges➤ Gladiator Pupil\ Stick Challenges➤ Boxing and Self Defence sessions

15. Healthy School & Sporting Achievements

Ysgol y Ddraig is a Healthy School and holds the National Quality Award as part of the Welsh Network of Healthy Schools Schemes.

Big Fresh are the provider of school meals. Drinking water is provided throughout the school day. Children are able to bring to school piece of fruit as healthy snack.

During the summer term, Years 4, 5 and 6 participated in a programme of swimming lessons at Llantwit Major Leisure Centre.

Unfortunately, due to restrictions our sport teams were unable to participate in any inter schools tournaments. We look forward to a time when we can resume such opportunities.

16. Pupil Achievements

Please keep us informed of your children's interests outside school as we strive to celebrate all sorts of ability, talent and success.

17. Additional Learning Needs

Miss Bale is the Additional Learning Needs Co-ordinator (ALNCO) and Mr John Durrant is the Governor Representative for Additional Learning Needs.

All children are provided with work that is appropriate to their stage and ability. Children are identified for Additional Needs support by a variety of independent and on-going teacher assessment. If necessary, and in consultation with parents, children are included on an Additional Learning Needs Register to track their progress. This is updated regularly and is audited. Where possible and appropriate, children are supported by their class teachers and Learning Support Assistants within the classroom as this provides the most effective support. There are specific interventions, where children are supported on a one to one or small group basis. Regular contact is maintained with other schools and agencies through regular meetings attended by the ALNCO.

The school procedures are constantly reviewed in line with the Code of Practice, working with outside agencies such as the educational psychologist, behaviour support staff, specialist teachers and other external agencies when required. Parents are always part of any decision making to involve outside bodies and are kept informed of progress and changes.

18. Toilets

There are adequate numbers of toilets including access to disabled toilets in our school. The toilets are monitored through the school day by staff and cleaned daily to a high standard by our cleaning team.

19. Session Times (Under normal operations)

Welsh Government extended the temporary disapplication to the Changing of School Session Times (Wales) Regulations 2009 to the end of the academic year. This allowed schools to make temporary changes to their school session times due to the incidence of coronavirus.

Under normal operations school sessions are as follows:

9.00am - 11.30am	Morning Nursery Session
8.50am - 11.50am	Morning Session for Reception, Years 1, 2 & 3
8.50am - 12.20pm	Morning Session for Years 4 - 6
12.40pm - 3.05pm	Afternoon Session for Reception, Years 1 & 2
12.40pm - 3.15pm	Afternoon Session for Year 3
1.10pm - 3.15pm	Afternoon Session for Years 4 - 6

20. Term and Holiday Dates 2021-2022

School Holiday Dates

2021/2022

Term	Begin	Half term		End	No. of School Days
		Begin	End		
Autumn 2021	Friday 3 Sept 2021	Monday 25 Oct 2021	Friday 29 Oct 2021	Friday 17 Dec 2021	71
Spring 2022	Tuesday 4 Jan 2022	Monday 21 Feb 2022	Friday 25 Feb 2022	Friday 8 Apr 2022	64
Summer 2022	Monday 25 April 2022	Monday 30 May 2022	Friday 3 Jun 2022	Friday 22 July 2022	59
				TOTAL	194

Thursday 2 Sept 2021 will be a designated INSET day for **all** LEA Maintained Schools. The remaining four INSET days to be taken will be at the discretion of each individual school following appropriate consultation with staff.

All schools will be closed on **Monday, 2nd May 2022** for the May Day Bank Holiday.

Significant dates:	Christmas	Saturday 25 December 2021
	Easter	Good Friday 15 April 2022 Easter Monday 18 April 2022
	May Bank Holidays	Monday 2 May 2022

Queen's Platinum Jubilee (QPJ)	*Thursday 2 June 2022
Bank Holiday Celebrations	+Friday 3 June 2022

*Moved from normal Mon 30 May 2022 as a one off to celebrate the QPJ
+Extra one off bank holiday in recognition of QPJ therefore one day taken off this academic year.

APPENDIX A

Vale of Glamorgan Council Ysgol Y Ddraig Outturn Report 2020/21 Revenue Summary

COST CENTRE CODE	DETAIL	ANNUAL BUDGET	TOTAL ACTUAL
101005	CONT. TO FUNDS		457.73
101005	CONT TO CAPITAL OUTTURN		457.73
101005	EMPLOYEES	1,284,025.00	1,260,043.84
101005	TEACHING EMPLOYEES	915,200.00	883,034.60
101005	NON TEACHING EMPLOYEES	235,581.00	233,572.23
101005	GRANT EMPLOYEES	133,244.00	142,937.01
101005	OTHER DIRECT EMPLOYEES		500.00
101005	INTERNAL RECHARGES EXPEND	115,732.00	121,424.24
101005	INTERNAL RECHARGES EXPEND	115,732.00	121,424.24
101005	PREMISES	110,488.00	90,889.41
101005	CLEANING AND DOMESTIC SUPPLIES	41,300.00	28,791.61
101005	ENERGY	13,600.00	10,001.31
101005	GROUNDS MAINTENANCE	2,500.00	1,080.00
101005	RATES	38,253.00	38,253.00
101005	REPAIRS & MAINT OF BUILDING	10,755.00	10,464.70
101005	WATER SERVICES	4,080.00	2,298.79
101005	SUPPLIES AND SERVICES	114,615.00	57,881.98
101005	CATERING	1,100.00	0.00
101005	COMMS AND COMPUTING	14,940.00	18,087.86
101005	EQUIP, FURNITURE & MATERIALS	24,480.00	22,802.98
101005	GRANTS & SUBSCRIPTIONS		3,392.90
101005	MISC EXPENSES	67,095.00	85.00
101005	PRINTING STATIONERY & OFFICE EXPS	7,000.00	4,995.06
101005	SERVICES		8,518.18
101005	TRANSPORT	2,000.00	191.60
101005	CAR ALLOWANCES	2,000.00	191.60
101005	CUSTOMER RECEIPTS	-31,591.00	-41,229.75
101005	CHARGE FOR SERVICE		-1,655.84
101005	DONATIONS		-3,793.00
101005	SALE OF PRODUCTS		-4,452.09
101005	SECONDMENT INCOME	-31,591.00	-31,328.82
101005	GOVERNMENT GRANT	-243,537.00	-462,278.27
101005	OTHER GOVERNMENT GRANTS	-4,604.00	-5,304.00
101005	WG GRANTS	-238,933.00	-456,974.27
101005	INTERNAL RECHARGES INCOME	-39,602.00	-51,928.33
101005	INTERNAL RECHARGES INCOME	-39,602.00	-51,928.33
101005	INTRA DEPARTMENTAL RECHARGE	-10,630.00	-10,630.00
101005	SEG WEG EIG INCOME	-10,630.00	-10,630.00
	Total 101005	1,301,500.00	964,822.45

Vale of Glamorgan Ysgol Y Ddraig Outturn Report 2020/21 Balance Sheet Summary

COST CENTRE	BSLEVEL3	OPENING BALANCE	MOVEMENT	CLOSING BALANCE
910050 - Ysgol Y Ddraig	Schools Employees and misc balances	-14,475.45	-322,202.10	-336,677.55

